

Bayala

PRIVATE SAFARI LODGES



Bayala

PRIVATE SAFARI LODGES







A Riveting and wondrous pageant of nature

Bayala Private Safari Lodges – an unrivalled wildlife safari lodge

Located on Zuka Private Game Reserve

BIG 5 game viewing within the Munyawana Conservancy of 30,000ha pristine wilderness

3 hours' drive from King Shaka International Airport in Northern Zululand, KwaZulu-Natal

Founders Lodge – 24 Rooms (8 Family Inter-leading)

Safari Lodge – 24 Rooms (1 family interleading)

Families welcome

Families welcome

Rates – Dinner, Bed and Breakfast and 1 or 2 Game Drives per day, excludes drinks and incidentals

Lunch is available on request

Free Wifi in common area

The idea is to escape daily technology and enjoy the tranquil surroundings

Bush Dinners or Bush Breakfasts are very popular at an extra cost

Field Rangers – Game Drives daily at ± 6:00/30am and 15:00/30pm subject to season and weather conditions.

Lodges have a perimeter electric strand fence – no one is permitted on foot outside the lodge precincts.



Chic lounges and bars, dining both
indoors and outdoors












Bayala
PRIVATE SAFARI LODGES







Life is lived with homespun finesse....



Modern comfort











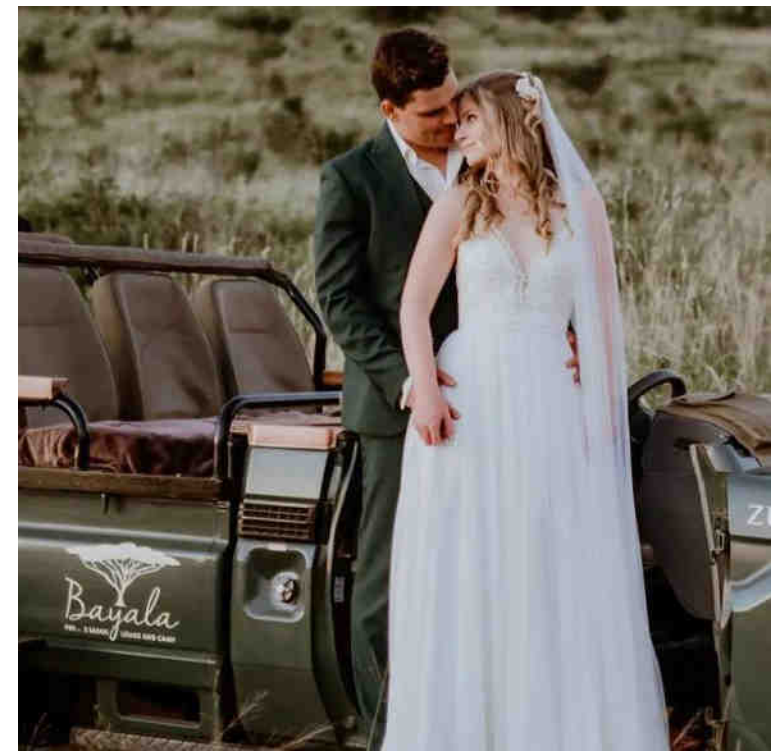
TOYOTA LAND CRUISER



Bayala
LODGE AND CAMP

SAFARI

Weddings & Events



Celebrations

- Celebrate a birthday, an anniversary, a milestone event or family reunion at Bayala Private Safari Lodges.
- Bring your special celebration alive with the wonderment and surprise of an African safari.
- Tailor-made to match your dream, your private celebration in Bayala's wonderland will long be cherished.



Welcome to your Big 5 Safari Experience















Bayala

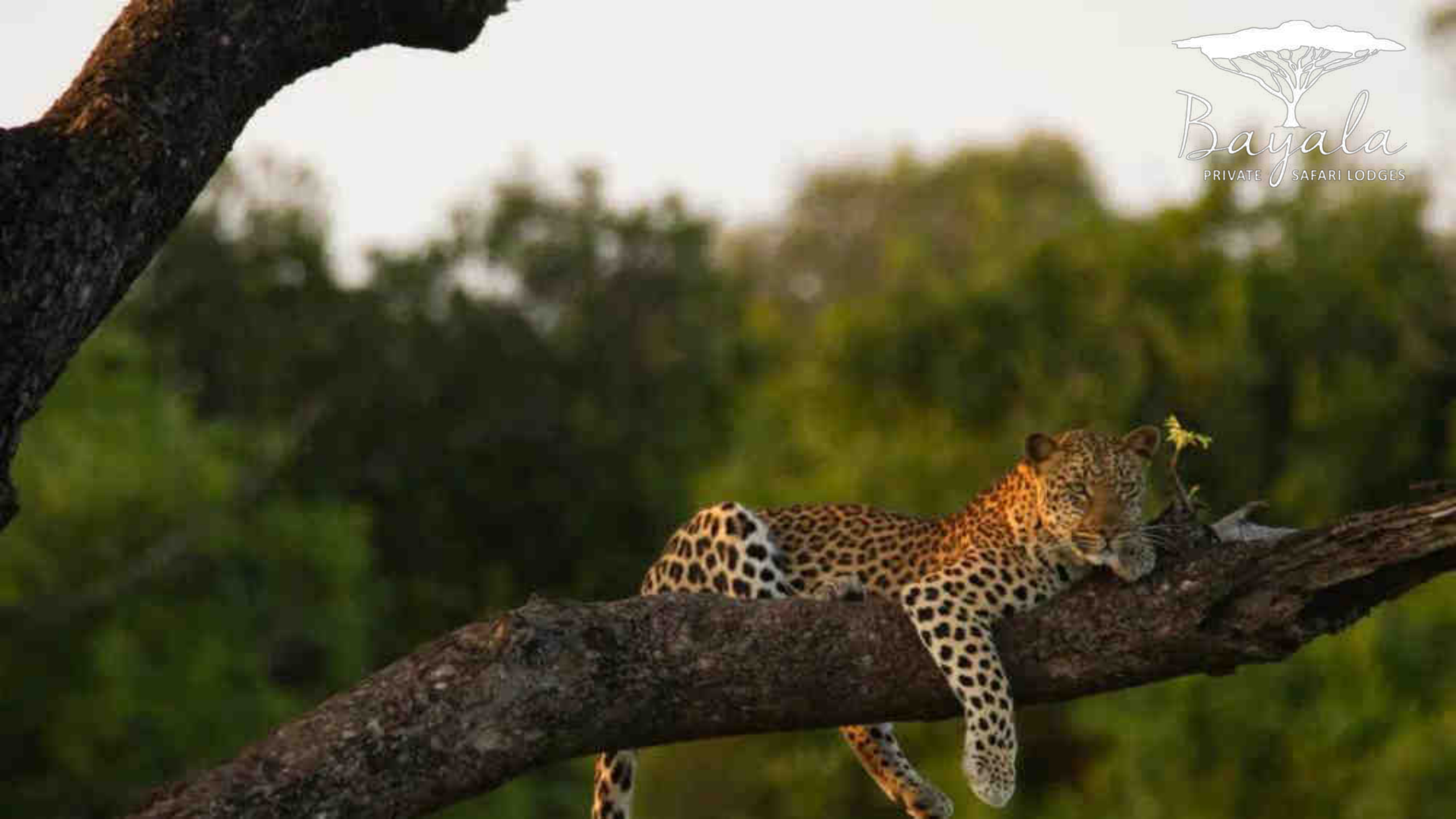
PRIVATE SAFARI LODGES







Bayala
PRIVATE SAFARI LODGES









THANK YOU



Kind Regards
Lizelle van Zyl
Marketing

Tel: (+27)35 562 0498 | (+27)79 317 6742
www.bayalagamelodge.co.za



ZUKA
ESTABLISHED 2001



Member of
THE LILIZELA
TOURISM AWARDS
2019 | 2020

